



# TINA (Techsys Internet Navigator)

Thin client for data visualisation in SW applications



- **modern responsive design**
- **intuitive functions and high performance**
- **simple application implementation**

TINA is a thin visualization client for graphical presentation of technical data from control, monitoring and information systems. The server part is supported by the Twister software platform, TINA thus provides a powerful Human Machine Interface (HMI) for SW Twister, which becomes one of the possible data sources. The client part provides a modern visualization with a responsive design intended for common web browsers, including mobile devices, for access from the intranet or the Internet.

## → Basic Characteristics

- Offers all the basic functions of the TechSight smart visualization client
- Provides current overview of managed and controlled technologies and systems
- The modern product enabling the integration of selected functions of control, monitoring, information and SCADA systems into the world of internet browsers and mobile technologies
- Schematics usually represent the topology of the monitored or controlled technology and permit data to be displayed as numbers, text and images. 2D graphics are supported. Fonts, symbol shapes, color schemes and how individual elements are animated can be defined
- Table view used to display a structured summary of immediate values. The appearance and behavior of table rows, columns and cells depending on displayed values can be defined
- Graphs are used to display how one or more quantities vary over time, and allow effective comparison of trends, monitoring of dependencies and searching for extremes and

anomalies. For these activities, the graphs are equipped with a broad range of interactive tools. The basic appearance of graph axes, lines and grids can be defined

- In addition to displaying values, all configurations also support basic types of interaction with the system: entering quantities values and limits, acknowledging alarms, issuing commands or entering set points

## → Properties

- Modern responsive design using the latest web and JAVA technologies
- Backend built on WEB server Apache Tomcat
- Through the using of application and user profiles, the appearance of reports can be even better adapted to the requirements of individual users
- TINA can be used on standard web browsers: Internet Explorer, Firefox and Chrome, including browsers on mobile devices
- Various user authentication options (Active Directory, LDAP, databases, local / remote / encrypted storage, etc.)
- Various authorization options (Database, local / remote / encrypted storage, etc.)
- Secure communication between client and server using SSL certificate with the option to select the security level

ZCHx Aktivní alarmy			
	Datový bod	Typ alarm	Čas vzniku
» LDS	1 ZCH1_R1_VLSP_T3_H_BUCHHOLZ_STUP1	EQUAL	2020-01-23 07:41
» LDS	2 ZCH2_R2_24R2_H_ZTRATA_DC_110V	EQUAL	2020-01-22 12:21
» LDS	3 ZCH2_R2_31R2_H_ZTRATA_DC_110V	EQUAL	2020-01-22 11:52
» LDS	4 ZCH2_R2_22R2_H_ZTRATA_DC_110V	EQUAL	2020-01-22 11:52
» přehled	5 ZCH2_R2_5R1_H_TRAFO_BUCHHOLZ_VYSTR	EQUAL	2020-01-22 11:52
» MODK alarmy1	6 ZCH2_R2_3R2_H_ZTRATA_DC_110V	EQUAL	2020-01-22 11:52
» MODK alarmy2	7 ZCH2_R2_2R1_H_ZTRATA_DC_110V	EQUAL	2020-01-22 11:52
» MODK alarmy3	8 ZCH2_R2_19R2_H_ZTRATA_DC_110V	EQUAL	2020-01-22 11:12
» MODL Aktivní alarmy	9 ZCH2_R2_14R2_H_ZTRATA_DC_110V	EQUAL	2020-01-22 11:12
» MODL R110kV	10 ZCH2_R2_15R2_H_ZTRATA_DC_110V	EQUAL	2020-01-22 11:12
» MODL R22kV	11 ZCH2_R2_18R2_H_ZTRATA_DC_110V	EQUAL	2020-01-22 11:12
» MODR Aktivní alarmy	12 ZCH2_R2_11R2_H_ZTRATA_DC_110V	EQUAL	2020-01-22 11:12
» MODR DTS	13 ZCH2_R2_7R2_H_ZTRATA_DC_110V	EQUAL	2020-01-22 11:12
» MODR Mereni	14 ZCH2_R2_9R2_H_ZTRATA_DC_110V	EQUAL	2020-01-22 11:12
» MODR Ochrana	15 ZCH2_R2_5R2_H_ZTRATA_DC_110V	EQUAL	2020-01-22 11:12





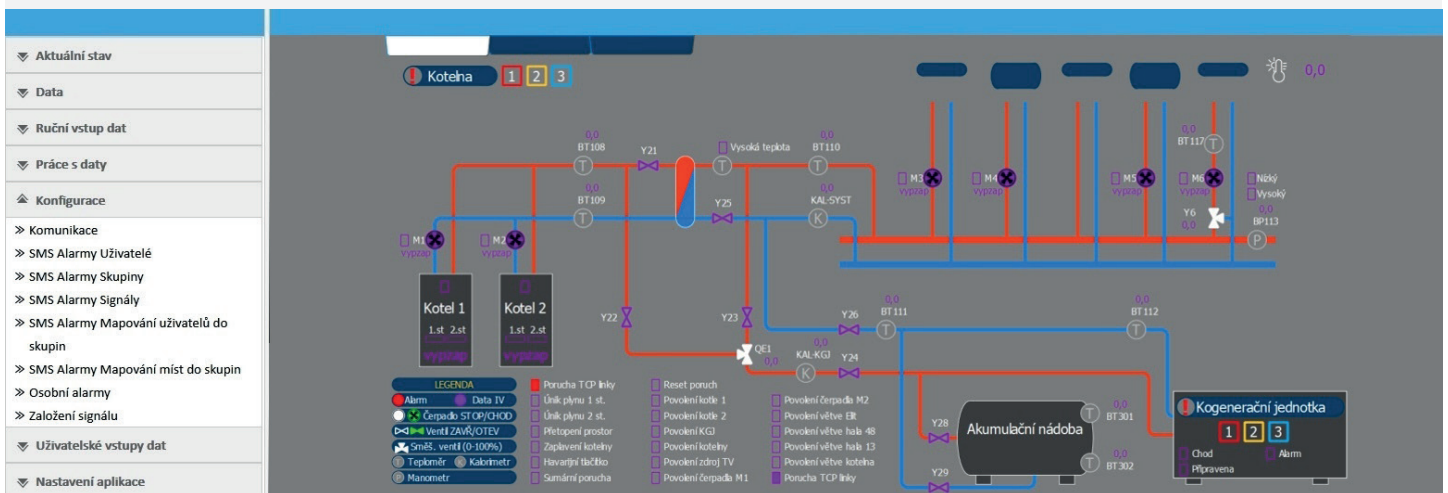
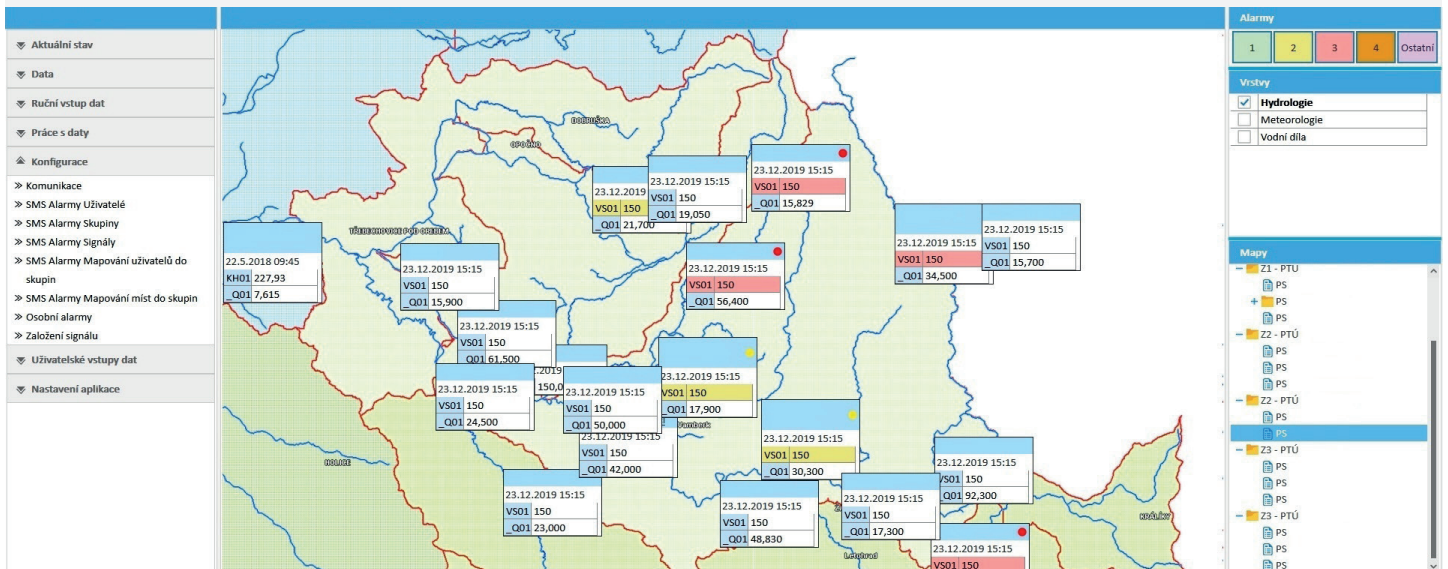
# TINA (Techsys Internet Navigator)

Thin client for data visualisation in SW applications

## → Application Examples

- Client stations of control, monitoring, information and SCADA systems intended for access to the general public on the company's intranet or for access by external contractors providing services
- Client workstations for customers and contractors, for example electricity, gas and heat traders
- Access to data of Energy Management
- Optimized and fast access to system or technology supervision for field workers
- Access for managers and executives for quick and clear control of production parameters, provided services or the state of the company

Pominulé alarmy				
	Datový bod		Čas vzniku	Pc hc
1	0218_AJJ1_04_TV21_S_Q2	4	1970-01-19 14:12:43.730+01:00	1
2	0218_AJJ1_04_TV21_S_QE	4	1970-01-19 14:12:43.715+01:00	2
3	0218_AJJ1_04_TV21_S_QE	4	1970-01-19 14:12:41.235+01:00	2
4	0218_AJJ1_04_TV21_S_QE	4	1970-01-19 14:12:41.125+01:00	2
5	0218_AJJ1_04_TV21_S_Q2	4	1970-01-19 14:12:40.688+01:00	1
6	0218_AJJ1_04_TV21_S_QE	4	1970-01-19 14:12:40.682+01:00	2
7	0218_AJJ1_04_TV21_S_QE	4	1970-01-19 14:12:40.095+01:00	2
8	0218_AJJ1_04_TV21_S_Q2	4	1970-01-19 14:12:39.984+01:00	1
9	0218_AJJ1_04_TV21_S_Q2	4	1970-01-19 14:12:39.897+01:00	1
10	0218_AJJ1_04_TV21_S_QE	4	1970-01-19 14:12:39.883+01:00	2
11	0218_AJJ1_04_TV21_S_QE	4	1970-01-19 14:12:39.810+01:00	2
12	0218_AJJ1_04_TV21_S_Q2	4	1970-01-19 14:12:39.801+01:00	1
13	0218_AJJ1_04_TV21_S_QE	4	1970-01-19 14:12:39.761+01:00	2
14	0218_AEA_03_T101_M_I2	5	1970-01-19 14:11:22.682+01:00	2
15	0218_AEA_03_T101_M_I2	5	1970-01-19 14:11:22.623+01:00	2
16	0218_AEA_03_T101_M_I2	5	1970-01-19 14:11:22.605+01:00	2
17	0218_AEA_03_T101_M_I2	5	1970-01-19 14:11:22.457+01:00	22



TECHSYS – HW a SW, a.s.

Prague Headquarters, Březinova 640/3a, 186 00 Praha 8, Czech Republic  
 České Budějovice Branch Office, U Výstaviště 1485, 370 05 České Budějovice, Czech Republic

tel.: +420 222 541 896

techsys@techsys.cz

www.techsys.cz

